

PRODUCT ID: 53960

Outdoor Blank-out LED Direct-view Sign

MODEL

TCL1434GGRGGR-B808/12-2VDC



DIMENSIONS

14" H x 34" W x 2.5" D (est. 12.038 lbs)

CLASS

CLASS: TCL Series

Control Method: Switch (not included) or external relay.

CONSTRUCTION

Back Construction: 0.050" Lift-n-Shift Back

Cabinet: 1-piece, corrosion resistant, extruded aluminum frame, 2.5" deep.

Face Material: 1/8" impact resistant, smoke-tinted polycarbonate (5109)

Faces: Single Faced Sign

Finish: Duranodic Bronze

Mounting Channel: None

ELECTRICAL

Flashing: Not Included

Input Voltage: 12-24 VDC

Photodimming: None

UL/cUL Listed: Listed for wet locations

MESSAGE

Illumination: Super bright direct view LEDs. Message blanks out when off.

Sign Messages: See message table below

Product View

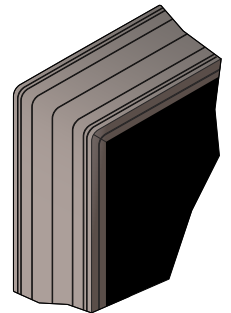
NOTE: Sign image may not exactly represent the finished product. For illustration purposes only.



Sample Display Options



Frame Detail



| MESSAGE | LED/COLOR | HEIGHT | AMPS |
|----------|----------------------|--------|-------------|
| DRIVE-UP | Green Wide Angle LED | 2.75" | 0.773-0.387 |
| OPEN | Green Wide Angle LED | 3.5" | 0.547-0.273 |
| CLOSED | Red Wide Angle LED | 3.5" | 0.413-0.207 |
| ATM | Green Wide Angle LED | 3.5" | 0.387-0.193 |
| OPEN | Green Wide Angle LED | 3.5" | 0.547-0.273 |
| CLOSED | Red Wide Angle LED | 3.5" | 0.413-0.207 |

NOTE: Above messages are independently controlled.

Signal-Tech

4985 Pittsburgh Ave.

Erie, PA 16509

Phone: (877) 547-9900

Fax: (814) 835-2300

Email: sales@signal-tech.com

Website: www.signal-tech.com

