

PRODUCT ID: 53910

Traffic-Grade LED Blank-Out Sign

MODEL

STR1919RW-A049/120-277VAC



DIMENSIONS

19" H x 19" W x 6" D (est. 19.87 lbs)

CLASS

Class: STO Class

Control Method: Switch (not included) or external relay.

CONSTRUCTION

Back Construction: 0.125" Lift-n-Shift Back

Cabinet: 1-piece, corrosion resistant, triple hollow, extruded aluminum frame, 6" deep.

Face Material: 1/8" impact resistant, smoke-tinted polycarbonate (5109)

Faces: Single Faced Sign

Finish: Flat Black

Mounting Channel: None

ELECTRICAL

Flashing: Not Included

Input Voltage: 120-277 VAC

Photodimming: Installed

UL/cUL Listed: Listed for wet locations

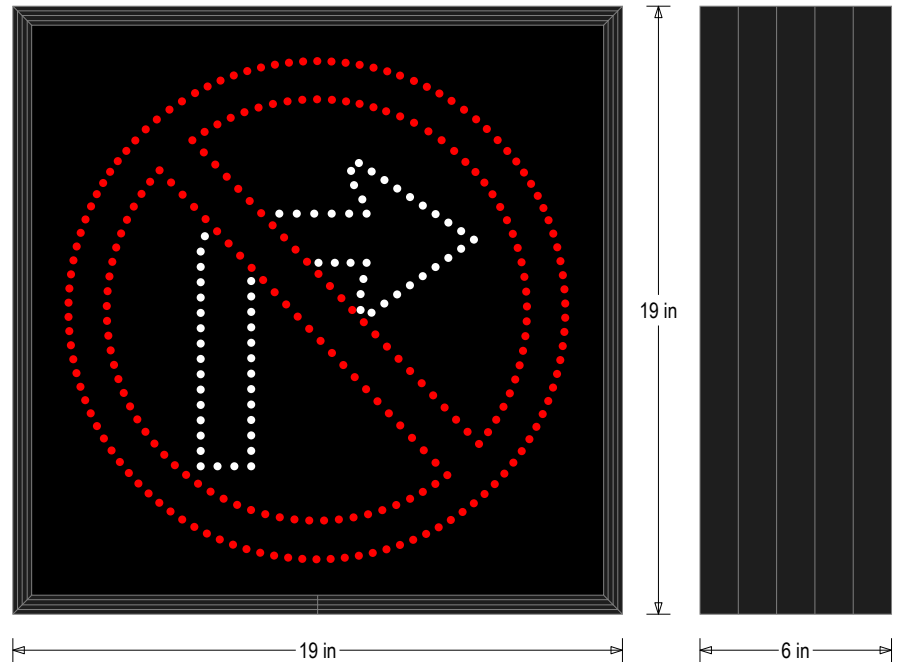
MESSAGE

Illumination: Super bright direct view LEDs. Message blanks out when off.

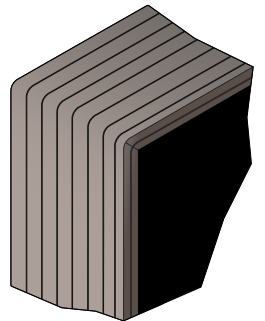
Sign Messages: See message table below

Product View

NOTE: Sign image may not exactly represent the finished product. For illustration purposes only.



Frame Detail



| MESSAGE | LED/COLOR | HEIGHT | AMPS |
|----------------------|-----------------------------|---------------|-------------|
| NO RIGHT TURN SYMBOL | Red, White Narrow Angle LED | 15.625", 9.5" | 0.171-0.074 |

NOTE: Above messages are independently controlled.

Signal-Tech

4985 Pittsburgh Ave.

Erie, PA 16509

Phone: (877) 547-9900

Fax: (814) 835-2300

Email: sales@signal-tech.com

Website: www.signal-tech.com

