

PRODUCT ID: 47637

Outdoor Blank-out LED Backlit Sign

MODEL

PHX3024WR-M224/120-277VAC



DIMENSIONS

30" H x 24" W x 2.5" D (est. 21.413 lbs)

CLASS

Class: PHX Series

Control Method: Switch (not included) or external relay.

CONSTRUCTION

Back Construction: 0.125" Lift-n-Shift Back

Cabinet: 1-piece, corrosion resistant, extruded aluminum frame, 2.5" deep.

Face Material: 1/8" thick, dark grey diffused acrylic

Faces: Single Faced Sign

Finish: Duranodic Bronze

Graphic: Printed graphic applied to surface

Mounting Channel: None

ELECTRICAL

Flashing: Not Included

Input Voltage: 120-277 VAC

UL/cUL Listed: Listed for wet locations

MESSAGE

Color: Black opaque

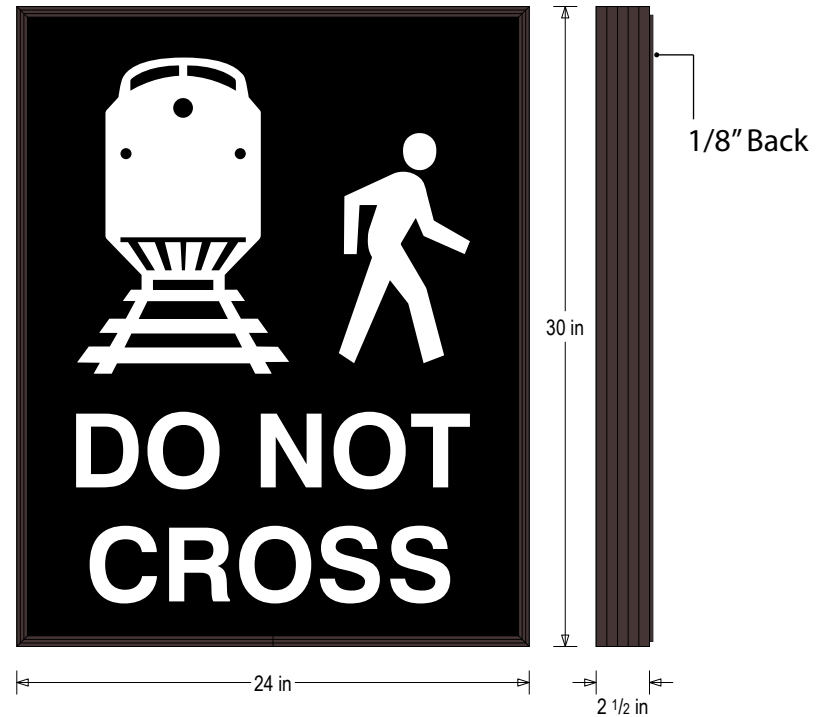
Font: Swiss 721 Bold Condensed BT

Illumination: Backlit with high intensity LEDs. Message blanks out when off

Sign Messages: See message table below

Product View

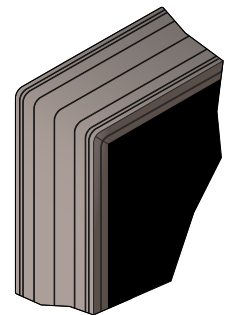
NOTE: Sign image may not exactly represent the finished product. For illustration purposes only.



Sample Display Options



Frame Detail



MESSAGE

LED/COLOR

HEIGHT

AMPS

Train Symbol Pedestrian DO NOT CROSS	White Wide Angle LED	14.875", 10.75", 3.5"	1.019-0.441
Train Symbol Pedestrian DO NOT CROSS	Red Wide Angle LED	14.875", 10.75", 3.5"	0.679-0.294

NOTE: Above messages are independently controlled.

Signal-Tech

4985 Pittsburgh Ave.

Erie, PA 16509

Phone: (877) 547-9900

Fax: (814) 835-2300

Email: sales@signal-tech.com

Website: www.signal-tech.com

