

## PRODUCT ID: 10399

### Outdoor Blank-out LED Direct-view Sign

#### MODEL

TCL1418DAA-A172/120-277VAC



#### DIMENSIONS

14" H x 18" W x 5.5" D (est. 15.321 lbs)

#### CLASS

CLASS: TCL Series

Control Method: Switch (not included) or external relay.

#### CONSTRUCTION

Back Construction: 0.050" Lift-n-Shift Back

Cabinet: Corrosion resistant, extruded aluminum frame. 5.5" deep, mitered construction.

Face Material: 1/8" impact resistant, smoke-tinted polycarbonate (5109)

Faces: Double Faced Sign

Finish: Duranodic Bronze

Mounting Channel: None

#### ELECTRICAL

Flashing: Not Included

Input Voltage: 120-277 VAC

Photodimming: None

UL/cUL Listed: Listed for wet locations

#### MESSAGE

Illumination: Super bright direct view LEDs. Message blanks out when off.

Sign Messages: See message table below

## Product View

NOTE: Sign image may not exactly represent the finished product. For illustration purposes only.

Side A



14"

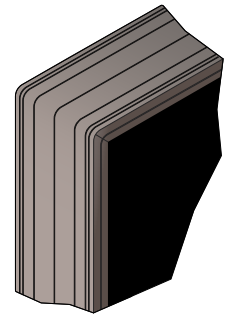
18"

5.5"

Side B



Frame Detail



#### MESSAGE

#### LED/COLOR

#### HEIGHT

#### AMPS

CAUTION VEHICLE EXITING	Amber Wide Angle LED	2.875"	0.135-0.058
-------------------------	----------------------	--------	-------------

CAUTION VEHICLE EXITING	Amber Wide Angle LED	2.875"	0.135-0.058
-------------------------	----------------------	--------	-------------

NOTE: Above messages are independently controlled.

#### Signal-Tech

4985 Pittsburgh Ave.

Erie, PA 16509

Phone: (877) 547-9900

Fax: (814) 835-2300

Email: sales@signal-tech.com

Website: www.signal-tech.com

